

FoitAlbert

A S S O C I A T E S

Architecture. Engineering. Surveying. Environmental.

MBE / DBE



2020 Fastest Growing Firms

Buffalo

Albany

Manhattan

Queens

ABOUT US



FOIT-ALBERT ASSOCIATES IS AN AWARD-WINNING, NEW YORK STATE BASED, MULTI-DISCIPLINARY ARCHITECTURE, ENGINEERING, ENVIRONMENTAL & LAND SURVEYING CONSULTING FIRM

Since our inception in 1977, Foit-Albert has approached each new project with an open mind and sincere desire to create the best possible results for its customers. This client-centered approach focuses on the mission of the client, the vision and expectations of the project and the collaborative process which inspires creative concepts that often exceed expectations.

Foit-Albert Associates is a **Minority Business Enterprise (MBE)** certified by the New York State Department of Economic Development Division of Minority and Women's' Business Development, Dormitory Authority State of New York, County of Erie and City of Buffalo, NYC Small Business Services, NYC School Construction Authority, Port Authority of New York and New Jersey, Pennsylvania Small Diverse Business, and a **Disadvantaged Business Enterprise (DBE)**.

Manhattan Queens Albany Buffalo

SERVICES

ARCHITECTURAL SERVICES

Architectural Design
Historic Preservation
Interior Design
Sustainable Design
Master Planning
LEED™ Design
Code Review
Building Envelope Analysis
Air Infiltration Analysis
Construction Administration
Construction Management
Feasibility Studies
Owner Representation
Architect of Record
NYC Landmarks Preservation
Commission Compliance
360 Photography

ENVIRONMENTAL SERVICES

Regulatory Compliance
NEPA and SEQR Compliance & Permitting
Biological and Natural Resources
Due Diligence &
Real Estate Transaction

ENGINEERING SERVICES

Site/Civil Engineering
Bridge Design
Construction Inspection
Construction Management
Structural Engineering
Highway & Road Design
Stormwater Management
SWPPP Design & Inspections
Culvert Inspections
Canal Inspections
Responsible Project Management
Planning Board Review
Emergency Response
Geographic Information System (GIS)

BUILDING SYSTEMS ENGINEERING

M/E/P Engineering
Refridgeration Engineering
Process Piping Engineering
Building & fire code analysis
Fire suppression and detection
Special hazard fire suppression
Water supply evaluation
Smoke management
Egress analysis
Hazardous material storage and classification

SURVEYING SERVICES

ALTA/NSPS Surveys
Horizontal and Vertical
Geodetic Control
Topographic Survey and Mapping
FEMA LOMA & LOMR-F
Applications
Digital Terrain Modeling
Right of Way and Easement Surveys
Telecommunication Facility Survey
Drainage Plans
Lot Grading Plans
GPS Services
Volumetric Surveys
Gas Line Surveys
Forensic Surveys
Industrial Surveys
FAA 1A and 2C Certifications
GIS
High-Definition Laser Scanning





ARCHITECTURE

The architectural group brings extensive experience in the design of new buildings and the rehabilitation and restoration of existing facilities. Clients include public and private sectors, and encompass federal, state, municipal, commercial, institutional, and industrial projects. Project types include colleges and universities, K-12 educational institutions, municipal facilities, cultural and heritage facilities, housing projects, zoos and aquariums, healthcare institutions and parks & recreation projects. We also have historic preservation specialists and New York State certified code-enforcement officials.

Our team develops creative cost-effective solutions, based on sound building design principles, to bring total value above and beyond the client's expectations.



SELECT CLIENTS

- Port Authority of NY & NJ
- Metropolitan Transportation Authority
- Niagara Frontier Transportation Authority
- State University Construction Fund
- New York State Office of Parks Recreation and Historic Preservation
- Dormitory Authority State of New York
- Erie Canal Harbor Development Corporation
- United States Postal Service
- New York State Department of Transportation
- New York State Thruway Authority
- Office of General Services
- New York City Health & Hospitals
- New York Power Authority
- New York Public Library
- Cities across New York State
- Counties across New York State
- State University Colleges



ENGINEERING

ENGINEERING

The engineering group offers design and inspection services for a variety of federal, state, municipal and private clients. Professional services include transportation, site/civil, environmental and structural engineering. Project types include bridges, culverts, highways, roads, intersections, parks, trails, multi-use paths, canals, stormwater management, environmental engineering, water systems, sewer systems, parking lots and planning board review projects.

SELECT CLIENTS

- Niagara Frontier Transportation Authority
- Port Authority of NY & NJ
- New York State Thruway Authority
- New York State Department of Transportation
- New York State Bridge Authority
- Office of General Services
- State University Construction Fund
- United States Postal Service
- New York City Health & Hospitals
- New York Public Library
- New York Power Authority
- New York Public Library
- Counties across New York State
- Towns, Villages & Cities across New York State
- Albany County Airport Authority





SURVEYING

SURVEYING

The surveying group provides a full range of surveying services, including Boundary Surveys of residential and commercial properties, Topographic Surveys, Right-of-Way Surveys, Bathymetric Surveys and High-Definition Terrestrial 3D Laser Scanning for architectural and engineering support, hazardous waste, industrial, horizontal and vertical geodetic control and aerial photo control surveys, along with construction layout, among others. Foit-Albert's survey field crews are equipped with current, state-of-the-art equipment supported by CADD graphic workstations.

The surveying group has field crews located in Buffalo and Albany, allowing service to the entire State of New York effectively.

We can assemble a professional, experienced team that can best provide the level of quality of service our clients expect and require.

SELECT CLIENTS

- New York State Department of Transportation
- Niagara Frontier Transportation Authority
- New York State Thruway Authority
- Office of General Services
- Erie Canal Harbor Development Corporation
- Federal Emergency Management Agency
- New York State Office of Parks Recreation and Historic Preservation
- New York City Department of Parks & Recreation
- New York City Health & Hospitals
- New York Public Library
- New York State Bridge Authority
- Gilbane
- AECOM
- Arcadis
- Hazen
- WSP
- Barclay Damon
- Hazen & Sawyer



ENVIRONMENTAL

ENVIRONMENTAL

Foit-Albert Associates' Environmental team is versed in hazardous material assessment/testing/design, Phase I Environmental Site Assessments, environmental permitting, preparation of NYSDOT Draft/Final Design Reports (Chapter IV), Wetland Delineation, Underground Storage Tank removal, SEQRA/NEPA compliance and NYSOPRHP submission/coordination.

SELECT CLIENTS

- Metropolitan Transportation Authority
- New York State Office of Parks Recreation and Historic Preservation
- Dormitory Authority State of New York
- New York State Power Authority
- Governor's Office of Storm Recovery
- New York State Bridge Authority
- New York State Thruway Authority
- Office of General Services
- State University Construction Fund
- State University Colleges
- Olympic Regional Development Authority
- Counties across New York State
- Siena College
- Mercy College
- Rebuilding Saratoga County
- Cities across New York State





BUILDING SYSTEMS ENGINEERING

BUILDING SYSTEMS ENGINEERING

Foit-Albert provides Building Systems Engineering services for new construction and re-development projects, central utility and infrastructure systems, fire protection and life safety analysis, HVAC, plumbing, electrical, process piping and high purity water systems, code reviews and analysis, feasibility studies, cost analysis, and construction support.

SELECT CLIENTS

- Port Authority of NY & NJ
- Metropolitan Transportation Authority
- New York State Insurance Fund
- New York City Department of Environmental Protection
- Cornell University
- Rensselaer Polytechnic Institute
- Rochester Institute of Technology
- SUNY Buffalo State
- SUNY Geneseo
- SUNY Binghamton
- SUNY at Buffalo
- SUNY Oswego
- SUNY Alfred
- Wegmans



JACOBS SCHOOL OF MEDICINE AND BIOMEDICAL SCIENCES

Foit-Albert Associates, as a subconsultant to HOK, provided architecture, engineering and surveying services on a State University Construction Fund project that built a new 620,000 sf School of Medicine and Biomedical Science at the State University of New York at Buffalo.

For the design and construction components of the project, Foit-Albert Associates' architectural services team prepared a condition report on the station, reviewed project-related planning documents in preparation for community outreach meetings, and conducted a zoning review and report. Architectural technicians prepared the 3D models as well. Foit-Albert's Project Managers participated in meetings with the NFTA and community entities. Foit-Albert staff worked closely with HOK preparing documentation and had two dedicated staff performing on-site construction administration.

Foit-Albert's civil engineering team compiled existing utility information, determined proposed flows and design loads for utility infrastructure, and determined whether sufficient capacity existed within the current sanitary sewer and water systems to support the needs of a new 500,000 sf building. Foit-Albert Associates surveying team utilized 3D laser imaging technology to verify the exterior and interior construction of the Allen-Hospital Station building. This allowed for accurate building models and for the ability to compare current conditions to the record contract documents. Using 3D scan information, Foit-Albert staff constructed a 3D model of the existing subway station incorporated into the final design.

Sampling and testing of asbestos and hazardous materials

were included in the scope of services provided by Foit-Albert Associates' environmental scientist. The removal of hazardous materials took place during the construction phase of work.

This project achieved a LEED Gold Rating.



NIAGARA COUNTY COMMUNITY COLLEGE LEARNING COMMONS

Foit-Albert Associates provided architectural, engineering, environmental and surveying services for the substantial renovation of the first and second floors of the Henrietta G. Lewis Library. Work includes:

- New construction of a Campus Center Learning Commons in an underutilized courtyard between Buildings D and E
- Substantial renovation of the first and second floors of the "D" Building, including the main level of the Henrietta Lewis Library
- Renovation of learning spaces and laboratories, offices, childcare and gallery
- Design of limited food service spaces
- Replacement of aging building systems
- Renovation of classrooms to allow for interface with Learning Commons and the existing Humanities Department
- Introduction of a sprinkler system
- Repair of damage to the building exterior, which experienced significant delamination and damage from escalating water infiltration



FOIT-ALBERT FOCUS

LAGUARDIA AIRPORT REDEVELOPMENT

Foit-Albert Associates was selected by the Design Joint Venture, a joint venture of Parsons Brinckerhoff and Hellmuth, Obata & Kassabaum (HOK) to provide Architectural Support Services for the Central Terminal Building Redevelopment Project.

Projects:

Pier A&B Demolition

Foit-Albert and its subconsultant team is providing architectural and engineering services through construction documentation for the demolition of Piers A&B to allow for the new connecting bridges between the new Head House and Concourses as well as airplane taxi ways.

West Garage Connector to Central Terminal B

Foit-Albert provided preliminary conceptual design (architectural and structural) and full design for a temporary pedestrian connector from the New West Parking Garage to the existing Central Terminal Building. Also prepared the construction documents, and Construction Administration. (completed)

Security Screening Check Point Reconfigure Pier A&B

Foit-Albert is currently providing services through construction documentation for the Temporary Security Screening Check Point at Existing Central Terminal B (CTB). Scope of Work includes architectural, interior design, structural engineering (if required), as well as signage and wayfinding, and coordination and management of mechanical, electrical, plumbing, fire protection, and fire alarm subconsultant.

Foit-Albert is providing dedicated project personnel

working in HOK's office. Currently our staff members are working on:

CC "B" Shell: Structural Coordination, Level 1 Flood Walls, Exterior Wall Details, Elevations, Flood Barrier, Roof Headhouse Design
Enclosure Development, Structural/MEP coordination
Processing of submittals, Head House, Concourse B, Hangar 5



FOIT-ALBERT FOCUS

LONG ISLAND RAILROAD

FAR ROCKAWAY / METROPOLITAN
TRANSPORTATION AUTHORITY

Foit-Albert Associates was tasked with a station demolition and new station design renovation at the Far Rockaway Station of the Long Island Railroad (LIRR). The station, located at the end of the Far Rockaway line sees daily commuter ridership of 5,638 persons, many of which use the adjacent commuter parking, while others utilize public transit to reach the station. It is not uncommon for riders to arrive and wait for their commuter train to depart. The LIRR wanted to update the station services and platform to better serve the waiting commuters in a secure, visible and weather protected station shelter. There was precedence at other stations for design vocabulary, which the LIRR wanted to replicate for brand continuity at Far Rockaway.

An existing CMU building adjacent to the platform was demolished to create a clear site for the new station enclosure. Foit-Albert positioned the station such that the existing platform canopy provided overlapping shelter for the station so passengers could access platform without being affected by inclement weather. New security fencing was installed to secure railroad infrastructure equipment from potential vandalism. Infrared heaters, self-service ticketing, benches, lighting on timers and security



cameras were provided in the shelter for passenger comfort and security. The team coordinated with the LIRR for data and communications to interface with the LIRR systems. Visibility of the platform was also paramount for passenger security. A new ramp and stairs were designed to serve the existing platform. Low maintenance hardscapes were employed to minimize staff resources for maintenance while maintaining ADA standards. Bird protection was introduced to minimize perching and the associated mess. All-weather site utilities were installed to allow for train maintenance and cleaning at the station.

The structure required detailing such that it could be built by the Owner's forces. The Design required phasing so that both demolition and new construction could occur without disrupting train service.



FOIT-ALBERT FOCUS

CR 156 OVER JACOBS CREEK

Foit-Albert Associates was retained to perform a preliminary study to investigate various alternatives to meet the project objectives and, once a feasible project was identified, prepare final construction documents to be used by County forces in the construction of a structurally deficient culvert on CR 156 over Jacobs Creek.

The scope of our services included topographic survey, LIDAR scanning, drainage design, highway design, structural design and construction administration.

Project Details This project involves reconstruction of CR 156 over

Jacobs Creek in Jefferson County, NY, a design which accomplished an aesthetically pleasing culvert in a historic environment with structural integrity and improved roadside safety. The existing culvert was severely deteriorated, creating a potential structural failure. In addition, the horizontal and vertical alignment at the approaches to the structure were geometrically non-standard and significantly contribute to existing roadside safety issues.

Foit-Albert Associates developed several alternatives to meet the project objectives of structural integrity, safety improvements and drainage concerns.

The constructed alternative involved slight realignment of the roadway and demolition of one building. The arch was relined with steel plate on a concrete knee wall. The arch walls were reconstructed with stamped colored concrete. With the new alignment, an overlook was built across from the cider mill and shoulders widened to accommodate cars parked during the fall season approaching the cider mill. All work was performed by the Jefferson County Highway Department staff, except for the culvert relining which was performed by Infrasteel.

FOIT-ALBERT FOCUS

RECONSTRUCTION OF OLD MILITARY ROAD

Old Military Rd (CR 35) is a two-lane rural arterial highway located within the Town of North Elba and the Village of Lake Placid. It is approximately 3.5 miles long and intersects with NYS Rte 86 to the north and NYS Rte 73 to the south. In addition to providing access to adjacent neighborhoods and businesses, it serves as a bypass road for motorists traveling outside of the Village of Lake Placid in Essex County, NY. Foit-Albert performed preliminary and final design services (Phases I-VI) for this federally-funded pass-through project.

The design work included improving the roadway geometry by eliminating sub-standard features from its intersection with Carolyn Rd to Averyville Rd and Station St. Numerous sub-standard features were present within the project limits, resulting in limited sight distance, which increased the potential for

traffic accidents. Additionally, this project provided a cost effective pavement treatment for a useful service life of 20 years; improvements to various intersections alignment; replacement of the deteriorated structure over Chubb River with a new bridge that consists of pre-cast concrete box beam superstructure; improved pedestrian access facilities along the east side of Old Military Road; improved bicycle access accommodations; and improved drainage collection system within the project limits.

This project is immediately adjacent to the proposed trail and the new bridge over the Chubb River and was designed with additional width in anticipation of the trail alignment potentially having to utilize the structure. The project entered into the Construction Phase with construction



beginning in June 2012. Foit-Albert Associates provided Construction Inspection services.

Reconstruction of the road included replacing the existing pedestrian facility with new curbing and five foot wide concrete sidewalks along the east side from the intersection of the Olympic Training Center driveway to Station St. Pedestrian crosswalks as well as other amenities.

FOIT-ALBERT FOCUS

NIAGARA FALLS STATE PARK REHAB TERM CONTRACT

As part of a three-year term agreement for a comprehensive capital rehabilitation and improvement plan for Niagara Falls State Park, Foit-Albert Associates, as a subconsultant, provided Professional Land Surveying services to support the design of numerous improvement projects within the park. Specifically the following:

Prospect Point and Lower Grove - Landscape and Facilities Improvements

Provided topographic survey and mapping of the Prospect Point and Lower Grove sites on the American side of the Falls. The survey also included establishment of horizontal and vertical control on the sites, underground utility information, railing location detail, location of test pits and bores, and water elevations of the Niagara River from the brink of the American Falls to the Goat Island Pedestrian Bridge.

North Shore Trails (Goat Island)

Luna Island Pedestrian Bridge - Trail improvements

Provided topographic survey and mapping of the North Shore Trail system and the pedestrian bridge to Luna island. The survey also included establishing horizontal and vertical control on the site, underground utility information and trail details.

Parking Lots 1 and 2 Upgrades

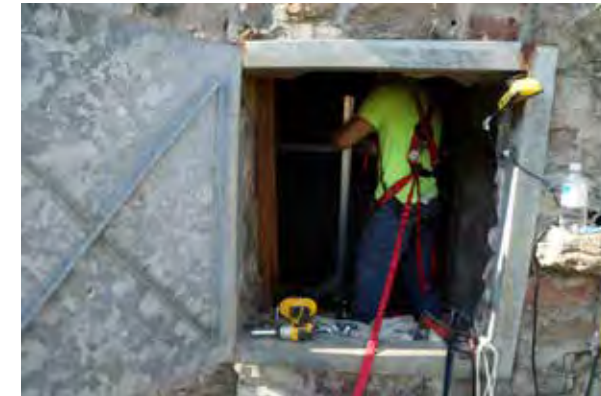
Provided topographic survey and mapping of Parking Lots 1 and 2, and included horizontal and vertical control and underground utility information.

Cave of the Winds Plaza - Landscape and Facilities Improvements & Goat Island/Cave of the Winds Plaza Area Improvements

Provided topographic survey and mapping of the entire north end of Goat Island from Stedmans Bluff to Terrapin Point. The survey also included establishing horizontal and vertical control on the site, underground utility information, floor elevations of the Cave of the Winds/NFSP Police Building, location of test pits and bores and water elevations of the Niagara River from the brink of the Canadian Falls to approximately two hundred feet upstream. A detail of the sluiceway at Terrapin Point was also provided.

Proposed NFSP Police Headquarters

Provided topographic survey and mapping of the proposed NFSP Police headquarters site located north of the Whirlpool Bridge. The survey also included establishing horizontal and vertical control, underground utility information and the location of test pits and bores.



FOIT-ALBERT FOCUS

NEWBURGH BEACON BRIDGE



Foit-Albert Associates, as a subconsultant, was responsible for hazardous materials sampling associated with the removal of the existing toll booth plaza for the conversion to all-electronic toll collection.

The scope of our services was sampling for asbestos, lead based paint and polychlorinated biphenyls (PCB's) to assess the toll plaza for suspect materials. All suspect materials were sampled for analysis of asbestos, lead and PCBs.

Project Details: Foit-Albert Associates' environmental team collected two (2) samples from each readily visible and accessible homogeneous material from the specified areas in accordance with New York Department of Labor Asbestos Industrial Code Rule 56.

Five (5) potentially lead containing paint samples and five (5) potentially PCB containing samples were sampled from various locations around the site as well. A full pre-demolition report was provided to the Prime consultant.

Foit-Albert was also responsible for assisting with permitting, endangered and threatened species determination and surface water determination.



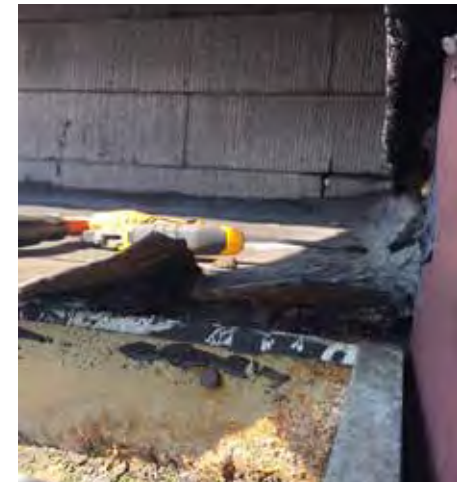
FOIT-ALBERT FOCUS

DORMITORY AUTHORITY STATE OF NEW YORK TERM CONTRACT

Foit-Albert Associates provides environmental services for a series of projects as part of a term agreements for the Dormitory Authority of the State of New York.

Environmental services included:

- pre-renovation inspections of multiple sites to identify suspect asbestos containing materials and Polychlorinated Biphenyl containing caulking
- collection of bulk samples from suspect materials
- documentation of sample locations on building plans
- photography and documentation of materials and confirmed ACM/PCBs
- report preparation for the abatement of ACM and PCBs



BOTANICAL GARDENS HOUSES 2 & 3 RENOVATIONS



Foit-Albert Associates was responsible for preparing construction documents and the project management for the demolition, abatement and reconstruction of two of the historical greenhouse buildings at the Buffalo and Erie County Botanical Gardens. The purpose was to preserve their existence and function.

The scope of our services focused on reviewing existing conditions, preparing updated design concepts, construction drawings, schedule, bidding and traditional construction administration phase services. The environmental scope was asbestos, lead, PCB inspections and reports.

Project Details:

Botanical Gardens Houses 2 and 3 contain the iconic waterfall and Koi pond area, some of the most popular attractions at the Botanical Gardens. Prior to work on this project, large stones were falling out of the foundation wall. House 3 needed to be closed on windy days for danger

of falling glass. The entire metal infrastructure of the greenhouses was reinforced from top to bottom; window panes were replaced with safety glass; new heating and electric for both the greenhouses and a state of the art misting system for plants was incorporated into the \$3.3M project.

Challenge:

Funding issues hampered the ability to replace some of the recommended repairs. Foit-Albert Associates prepared a phased plan to address the issues.

The reconstructed houses not only allow the Botanical Gardens to regain full use of their popular attractions, but also will ensure that the facility remains stable and useful for several more generations of visitors. In addition, reconstruction of the building shell provided an opportunity for the Botanical Gardens Society to re-vision the interiors of Houses 3 and 4.

BUFFALO ZOOLOGICAL GARDENS



Foit-Albert Associates participated in the development of the Master Plan for the Buffalo Zoo, including a significant update of this plan at its 10-year anniversary. With the Buffalo Zoo at the helm, Foit-Albert Associates has participated in the development of every exhibit at this institution over the past fifteen years, completing all of the first phase Master Plan improvements and initiating work of its later phases. This complex \$26.8 million undertaking includes the Sea Lion Cove, Otter Creek, Vanishing Animals and EcoStation exhibits, the expansion of the elephant holding and veterinary hospital facilities, the construction of the Children's Zoo with a local Erie Canal farm theme, the acclaimed M&T Bank Rainforest Falls and the exciting Arctic Edge polar bear exhibit.

The attendance at the Buffalo Zoo has increased significantly as a result of the Phase 1 work, increasing from 350,000 to 477,300 annually, and its self-generated revenues are well ahead of all projections given in the Master Plan. Most importantly, attendance in colder and slow seasons has increased dramatically, resulting in more steady income throughout the fiscal year. Attendance is now up 39% in the fall, and over 50% in the winter months from the previous year. These new exhibits have received rave reviews, and the educational benefits to the community at large are immeasurable.



BUFFALO
295 Main Street, Suite 200
Buffalo, NY 14203
716-856-3933

MANHATTAN
215 West 94th Street, Suite 517
New York, NY 10025
212-372-4813

ALBANY
435 New Karner Road
Albany, NY 12205
518-452-1037

QUEENS
Jamaica Center
89-31 161st Street, Suite 901
Jamaica, NY 11432
212-372-4813

www.foit-albert.com

