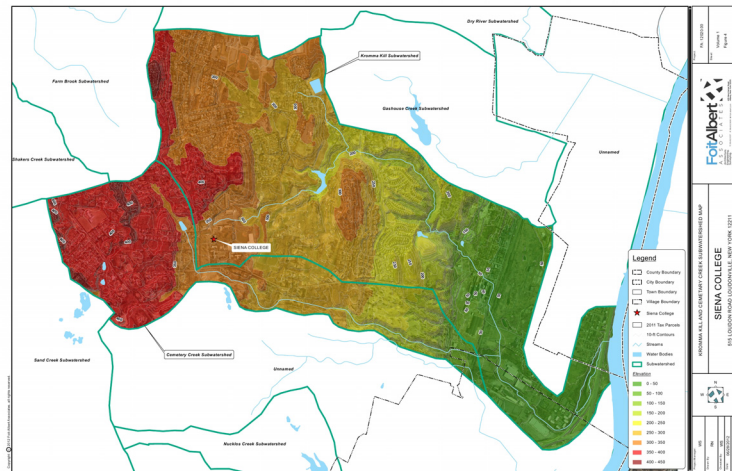


Campus-Wide Stormwater Management Plan

Siena College
Loudonville, New York



Services Provided
Engineering
Environmental
Survey

Foit-Albert Associates conducted a comprehensive stormwater analysis for the Siena College Campus, and surrounding areas, totaling 213+ acres of land within the Town of Colonie NY. The analysis was intended to identify deficiencies with existing stormwater infrastructure and provide innovative solutions for any issues found on campus. In addition to the analysis, Foit-Albert Associates also provided Siena College with a stormwater management planning document intended to outline the goals of stormwater treatment for future campus development.

The planning document provides information about the unique features of Siena College grounds, and guidance to create Green Infrastructure and Best Management Practices that fit the conditions of the campus. The planning document also provides Siena's Facilities Management department with a general Operations & Maintenance manual for all stormwater management practices on campus.